

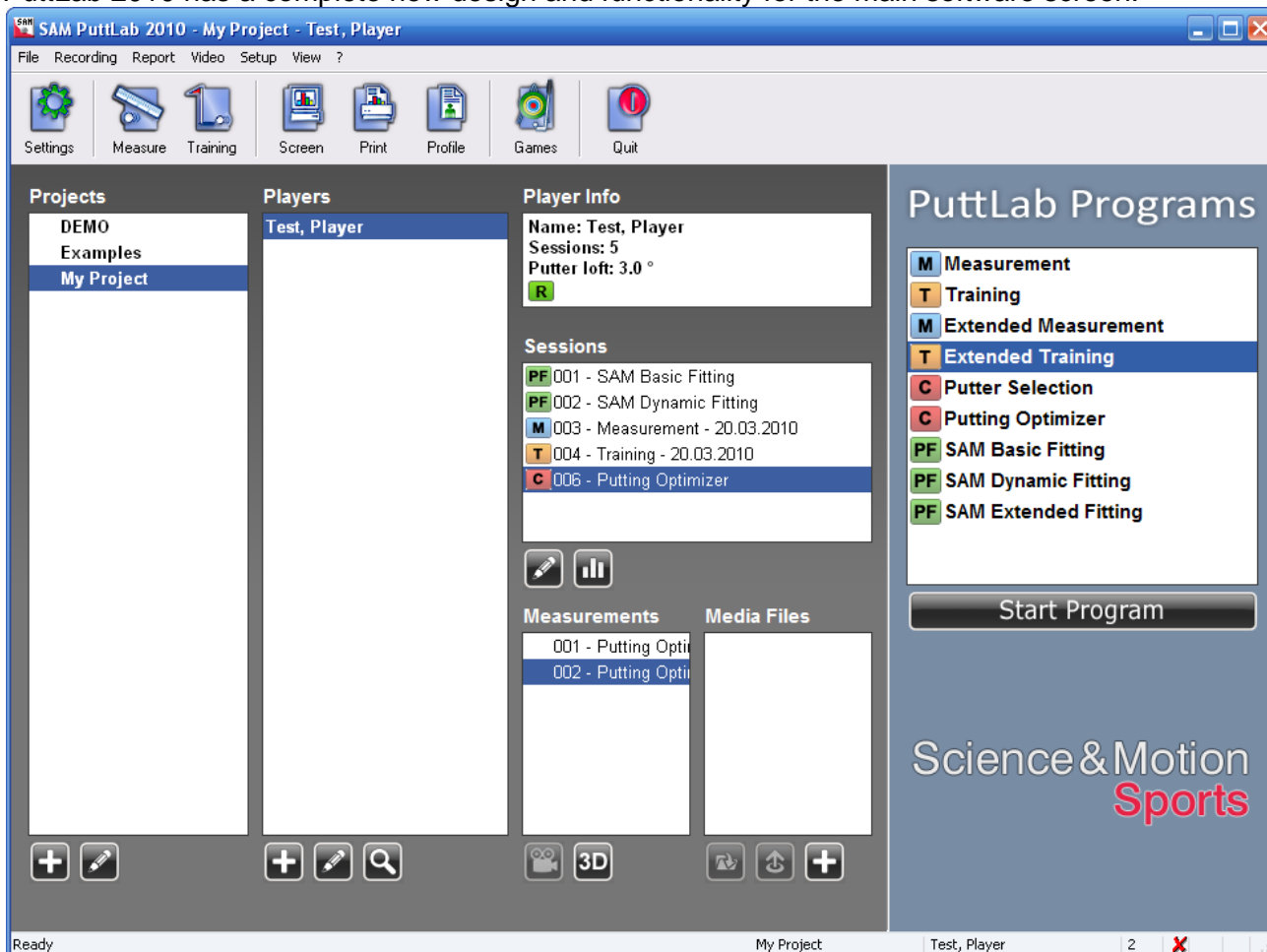
2 What's new in PuttLab 2010

PuttLab version 2010 includes a lot of new features. The main differences to the previous version 2008 are listed in this chapter to give a quick overview.

All the new features are described in detail in this manual. Just follow the links in this overview to jump to the detailed descriptions.

2.1 New software main screen design

PuttLab 2010 has a complete new design and functionality for the main software screen:



Main improvements:

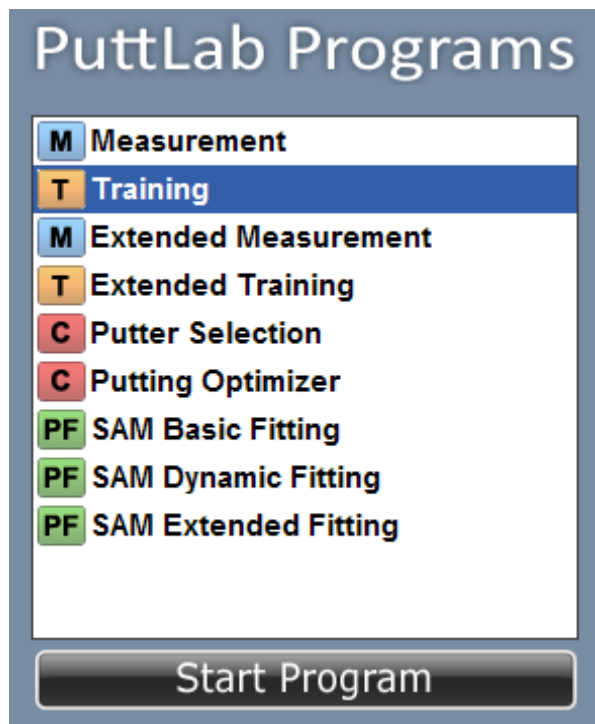
- Projects, Players and Sessions lists are bigger and always expanded to give a better overview
- Quick launch buttons allow direct access to most important functions
- Colored symbols show type of sessions (Measurement, Training, Comparison or Putter Fitting)
- Player info box shows basic information about selected player
- Move one or multiple players to different projects by drag and drop with mouse
- Double click on Session or Measurement will directly open the assigned report

Please read chapter [Using the SAM PuttLab software](#) for further information how to operate the PuttLab 2010 software.

2.2 New PuttLab "Programs" for different tasks

In PuttLab 2008 we introduced the PuttLab "Programs" as predefined putting training or analysis routines. These programs are now very much improved and completed for PuttLab 2010.

Completely new are the interactive Fitting programs (available in the Standard, Fitting and Pro Edition) and the "Putting Optimizer" Program.



New Fitting Programs:

SAM Basic Fitting:

Basic fitting program for fitting of:

- Head type (Blade, Mallet)
- Offset (single shaft, double shaft, center shaft)
- Shaft length
- Putter loft
- Putter lie angle
- Grip type (normal, medium, thick)

SAM Dynamic Fitting:

Fitting program for additional fitting of dynamic loft and lie and optimization of Basic Fitting results.

SAM Extended Fitting:

Additional fitting program for extended shaft and head weighting.

Putting Optimizer:

New comparison program to compare different putting conditions and to directly track and optimize your performance.

You can find more detailed information on the PuttLab programs here: [PuttLab Programs](#)

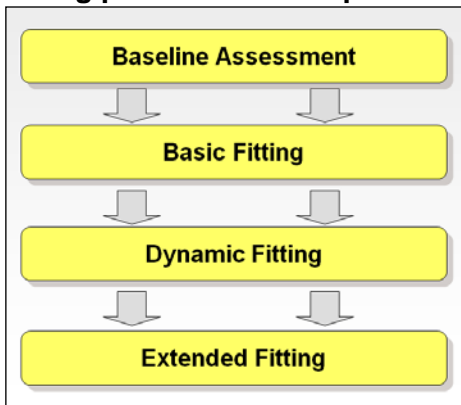
2.3 Putter Fitting module (all Editions except Basic Edition)

The Putter Fitting module provides a complete software aided process to determine all parameters to find or build the perfect putter for any individual player.

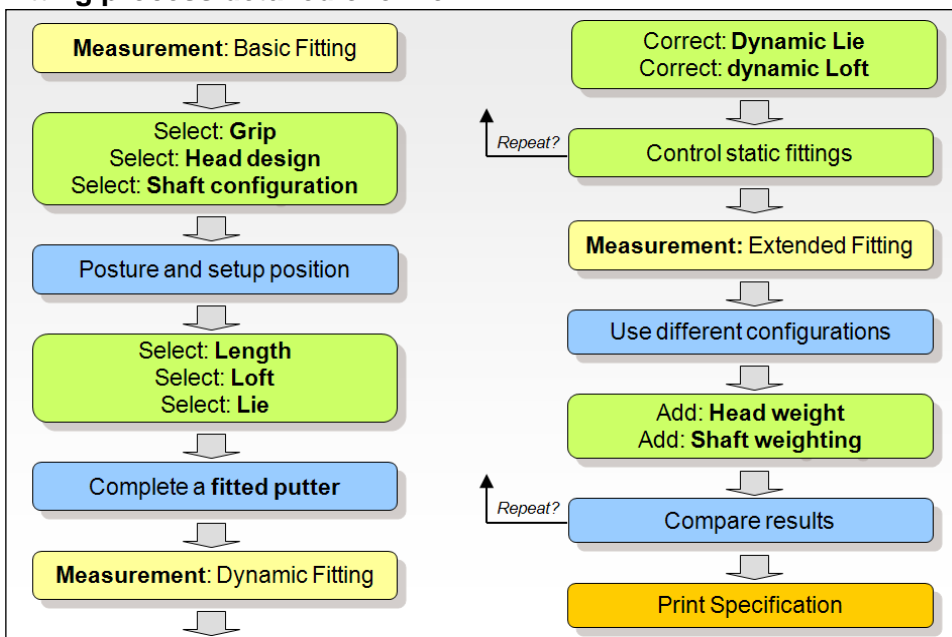
Main Features:

- The SAM PuttLab Fitting Wizard will guide you step by step through the complete fitting process
- The software will explain all necessary steps in detail
- The different aspects are decided interactively
- The software will provide automatic data analysis with recommendations for each aspect (based on PuttLab measurements)
- After the fitting a complete fitting specification can be printed
- The Fitting result will be stored in the PuttLab data and can be reviewed or even optimized at any time later in the future

Fitting process main steps:



Fitting process detailed overview:

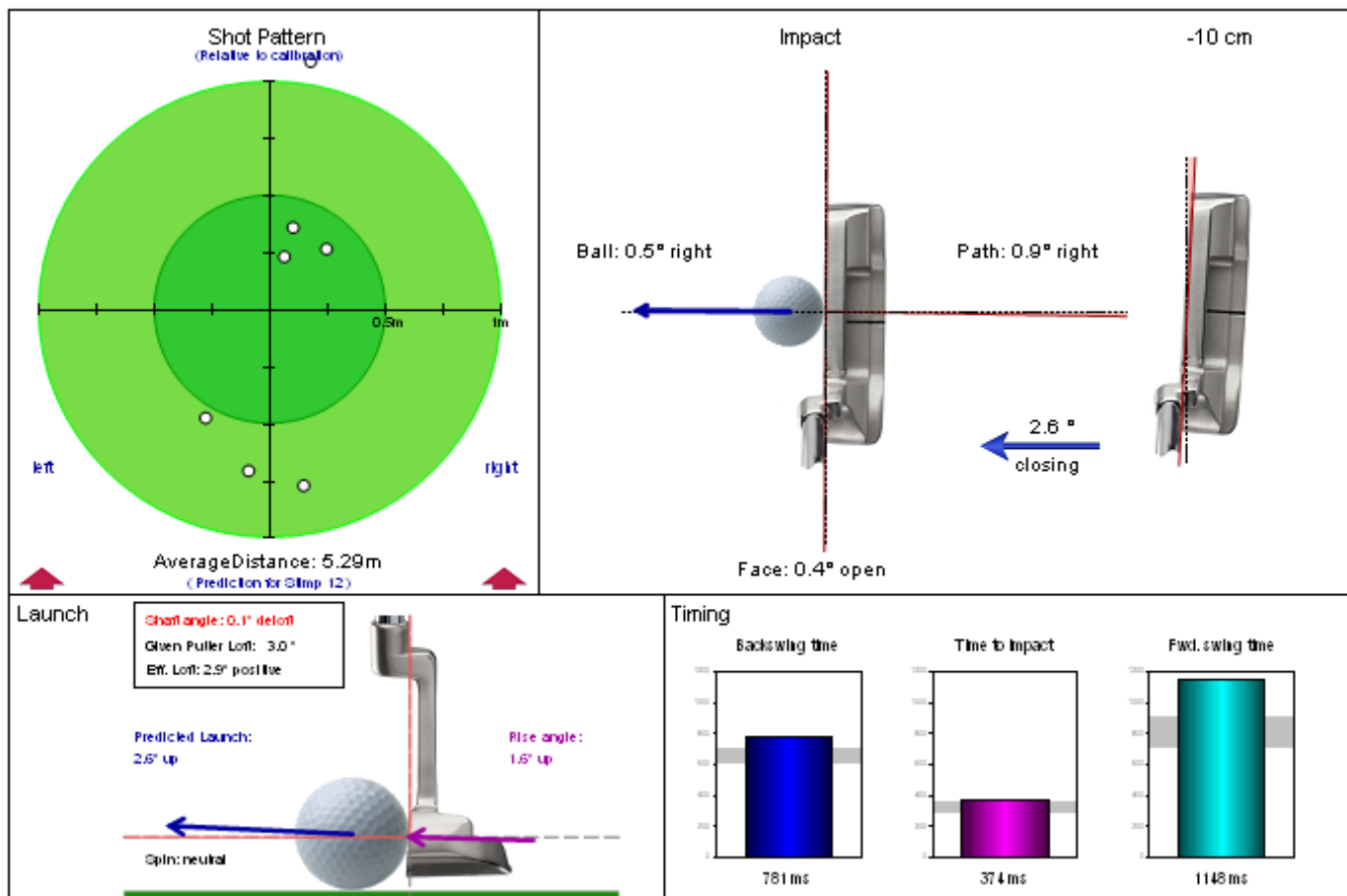


i A complete description of the fitting process is provided in the document "Fitting Manual.pdf" which can be opened from "?" section in the software main menu.

2.4 New and optimized reports

One page screen report

The new one page screen report introduces the new "shot pattern" result and gives a lot of important information on a single page.



The new report shows the following information:

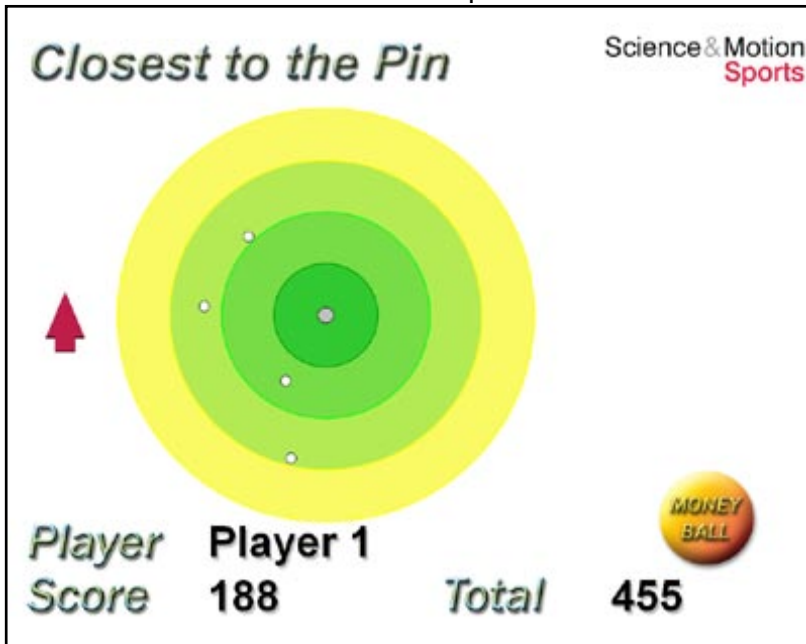
- Shot pattern – shows the spread of the ball positions based on assumption of ideal straight green and Stimp 12. Ideal ball position based on calibration direction.
- Face alignment for address and impact
- Amount of face change in backswing
- Path direction through impact
- Average ball direction
- Ball launch conditions including dynamic loft, rise angle and ball spin prediction
- Timing

All other reports are revised and several optimizations are done.

One example is the new overview start page of the Extended Screen report showing the average rating values as bar charts. This gives a good overview about technical, timing and consistency performance of the player without showing any details.

2.5 New putting game: Closest to the Pin

Based on the new "Shot Pattern" report PuttLab 2010 features also a new putting game:



How the "Closest to the pin" game works:

- the first putt is taken as a reference for direction and length
- all further putts should be played to the same position
- based on distance to the reference putt a score is calculated for each putt
- the goal is to play all putts as close as possible to the position of the first one

The player with the smallest average distance of all balls to the first ball played is the winner and will get the highest score.

This game is very good for training distance control and ball direction - and it is more fun to do this in competition to others or against the existing high score.

2.6 Improved Video and still images feature

If you have a video camera attached it is now possible to save still shots of the putting strokes putting data. The shots will be attached to the Media Files as JPG image files.

The following still shots will be saved:

1. Start of putt movement
2. End of backswing
3. Impact
4. End of putt movement

This feature is also a good documentation of your putting data as you see the player, how the setup was and also which putter he used etc.


How to set up video and the still images feature is described in detail in the [Video](#) section of this manual.

2.7 Online update check

As there will be released updates or fixpacks for the PuttLab software from time to time an automated update check function is build into PuttLab 2010 software.

The update check will be performed every 30 days after program startup. In case an update or fixpack is available the software will display a window with further information and a button that opens a website related to this fixpack. On this website you can download the fixpack and get further information on how to install it.

If a major update is available (e.g. 2012 when you are running 2010) you will also get a notification and the option to visit a website with further information.

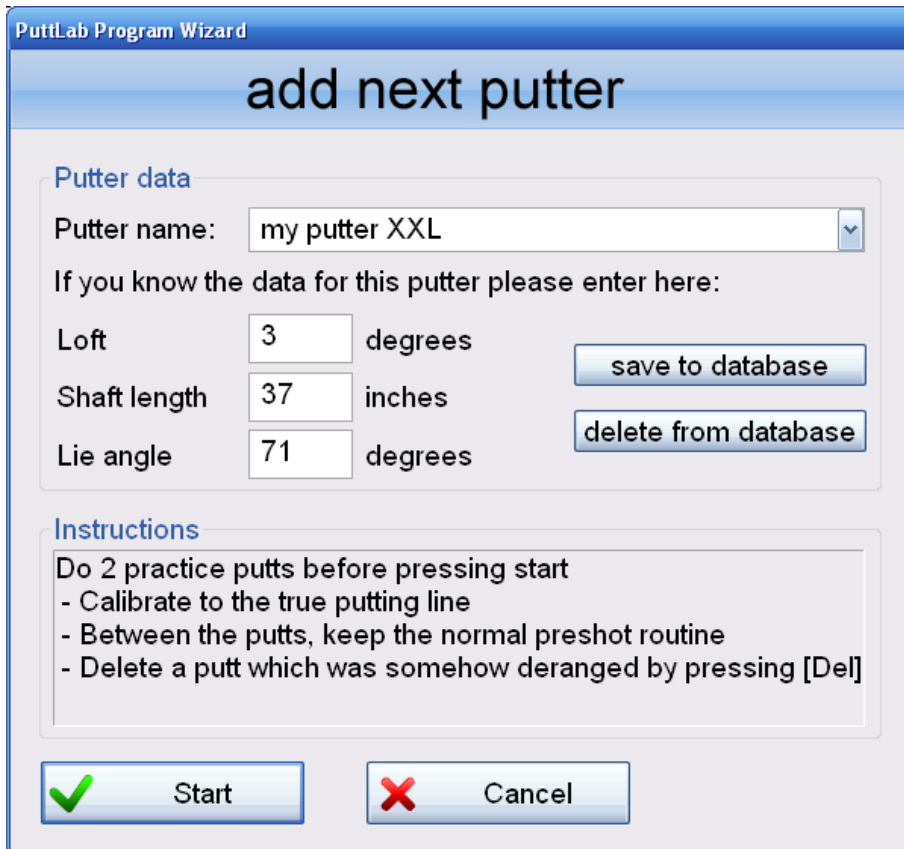
 The update check can also be performed at any time from the "?" section in the main menu. You have to be connected to the internet for a successful update check.

2.8 Putter database for Putter Selection mode

The "Putter Selection" program is a great feature to test different putters for a player and to find the best one very quickly.

Customers told us they use this regularly but have to enter the putter data all the time when they start a putter selection.

With PuttLab 2010 we now added a small putter database so that it is even more easy to use this feature for putter testing and also as a standard putter sales tool.



The screenshot shows a dialog box titled "PuttLab Program Wizard" with a sub-header "add next putter". It contains a "Putter data" section with a dropdown menu for "Putter name" set to "my putter XXL". Below this, it asks for specific data: "Loft" (3 degrees), "Shaft length" (37 inches), and "Lie angle" (71 degrees). There are two buttons: "save to database" and "delete from database". An "Instructions" section lists: "Do 2 practice putts before pressing start", "Calibrate to the true putting line", "Between the putts, keep the normal preshot routine", and "Delete a putt which was somehow deranged by pressing [Del]". At the bottom are "Start" and "Cancel" buttons.

Just enter your putter data and then press "save to database". For the next run you just have to select the putter from the list and you are ready to go.

2.9 Integration of SAM PuttStation into the software

The SAM PuttStation is a very useful extension for the PuttLab system. Especially for fixed indoor installations it makes the work with SAM Puttlab even more convenient.

The main advantage of the PuttStation is the simplified and very accurate calibration using the extendable ruler of the station (see picture). Just hold the putter against the ruler and press the calibration key and the system is perfectly calibrated.

The PuttStation is equipped with different sets of adjustable feet to ensure perfect adaption to the environment.

If the PuttStation is activated for usage in the software there are two other advantages:

- The Triplet does not have to be at the exact height on the putter shaft – so you don't need to measure the position when mounting the Triplet to the shaft
- Also the Triplet does not have to be perfectly aligned to the putting direction when the station is used for calibration.

This all makes the usage of PuttLab much more reliable and easy – especially for locations where quick change of putters or players happens (putter testing, putter fitting, multiple player evaluation in short time,...).

For details on how to operate the SAM PuttStation please refer to the manual which comes with the station. More information on how to activate the PuttStation in the software you can find in the [Program Settings](#) section of this manual.