



World's Leading Putt Coaching and Training System

New:
SAM PuttStudio



SAM PuttLab

The Complete Putting Solution

- Extremely accurate
- Analysis of 50+ putting parameters, including consistency
- Specific training modules
- Report Builder (80+ report templates)
- Suitable for amateurs up to PGA Tour players
- More than 2.000 satisfied customers worldwide
- Fast setup, portable for indoor/outdoor use
- 3D-Putt replay module
- App remote control (iPhone/iPad)



MOST ACCURATE TRACKING TECHNOLOGY

SAM PuttLab is the world's most accurate and comprehensive putt analysis and training system. It analyzes all important parameters of your putting stroke and displays the results in easy to understand graphic reports. The analysis reveals even the smallest details of your movements and allows you to develop improvements and training strategies.

The new SAM PuttLab 7 takes putt analysis to the ultimate level.

SAM PuttLab Applications

Improve Your Business!



NEW: SAM PUTTSTUDIO

SAM PuttStudio is the new reference for premium golf studios and provides the ultimate learning environment to improve your putting skills. It seamlessly integrates the latest technology for putt analysis and training into one complete and integrated solution.

SAM PuttStudio offers ingenious and synchronized feedback of all the results, including putt stroke analysis, 3D replay, high speed video, ball tracking, tiltable platforms & break putt training.



TRAINING & TEACHING

Using the SAM PuttLab training mode offers you the ability to customize individual training strategies and improve specific aspects of the putting stroke, such as putter face angles, face rotation, swing path, impact spot or stroke rhythm.

The immediate knowledge of result (KR) feedback for each putt guarantees significant and lasting training success.

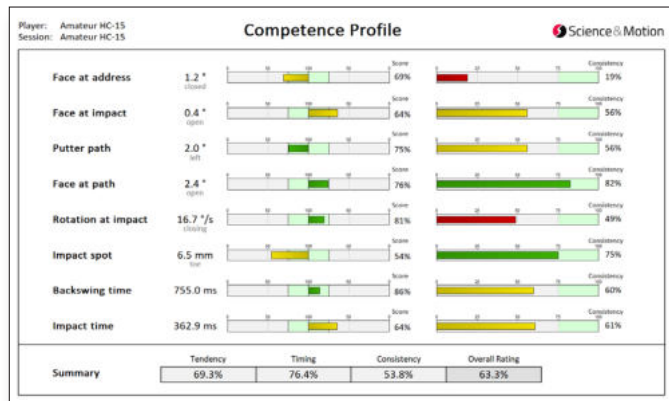


SHOP SOLUTION & PUTTER FITTING

PuttLab offers a turnkey solution to support putter sales in a shop environment. The SAM comparison protocol directly compares the customers' performance with different putters – an extremely smart way to select the best putter inside of minutes.

The SAM Easy fit protocol is a complete solution for professional putter fitting. Each relevant aspect is diagnosed in an interactive step by step process.

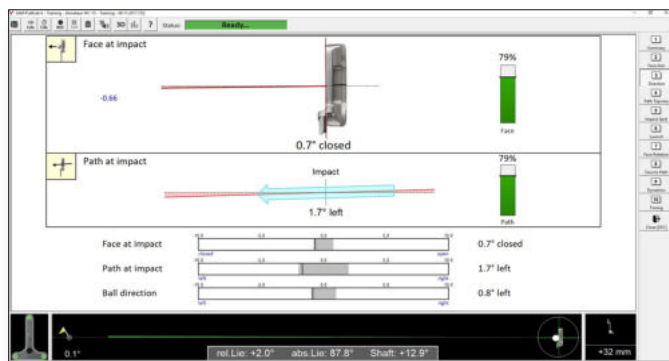
Software Modules of SAM PuttLab



DATA ANALYSIS

Comprehensive and Complete

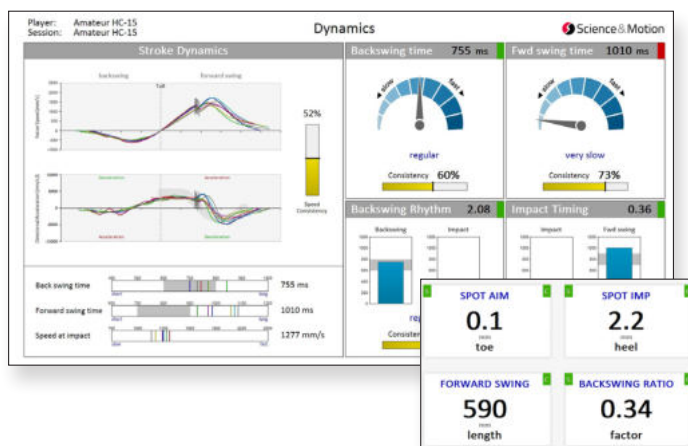
- Analysis of more than 50 putting parameters, including consistency
- Data for each putt stroke, data averages, benchmark charts
- Individual competence profiles
- Comparison to PGA Tour performance data
- Video integration & media file management



TRAINING MODE

Instant Feedback for Efficient Learning

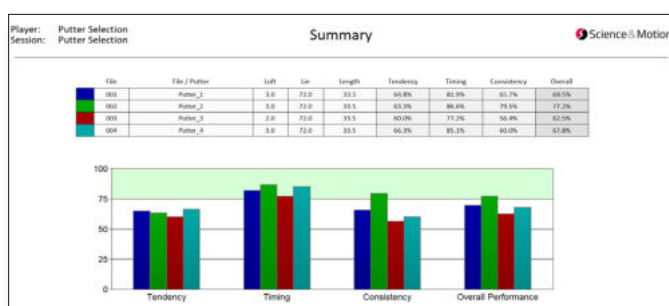
- Instant graphical and numerical results after each putt
- Various training screens for all relevant aspects
- Additional audio feedback
- Guarantees immediate and lasting training success



GRAPHIC REPORTS

Perfect Presentation of Results

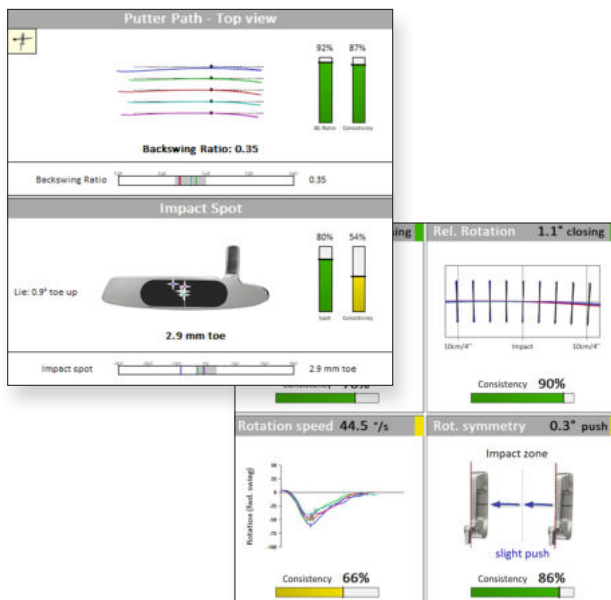
- Comprehensive multi-page reports
- Select from more than 80 report tiles in 4 sizes
- High resolution report printouts and PDF
- Simple and expert reports



PROFILES

Compare Measurements or Putters

- Directly compare up to 8 recordings
- Compare different training situations or different putters
- Track your performance over time

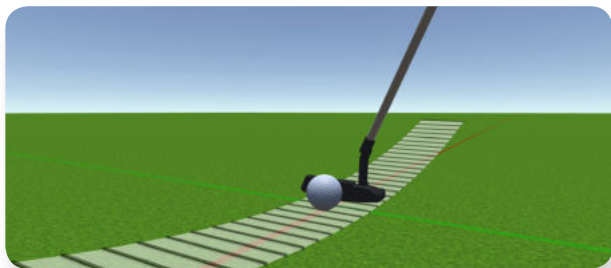


Report Builder

DESIGN YOUR OWN REPORT PAGES

A key feature of the new SAM PuttLab 7 software is the report module including the Report Builder. The software allows to build custom reports from a selection of more than 80 templates.

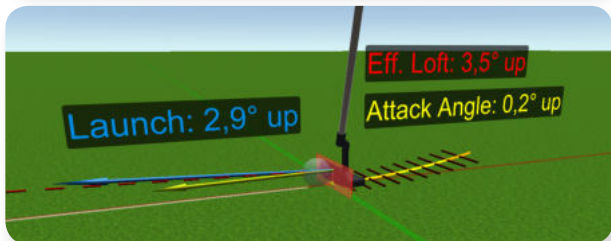
- Report Builder for customized reports
- Selection of more than 80 tiles in different sizes
- Also available during training
- New putting parameters available (i.e. swing plane)



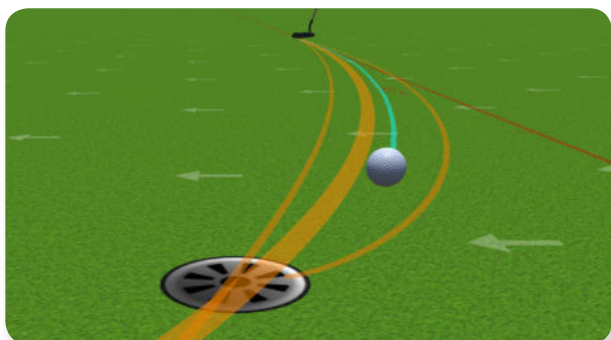
SAM 3D-Putt

PUTT ANALYSIS IN 3RD DIMENSION

SAM 3D-Putt is an add-on to the PuttLab software. Replay all putts in high-resolution 3D graphics.



- View the putter movement from any view angle
- Automatic replay after each putt in training mode
- Select from predefined view profiles
- Direct comparison with reference putts
- Display additional putting data

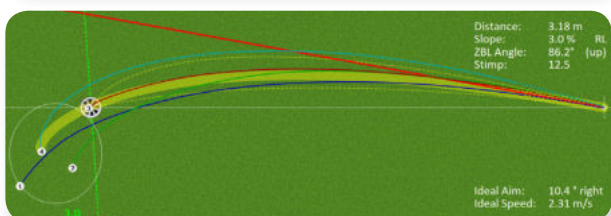


SAM BallTracker

TRACK YOUR BALL PERFORMANCE

SAM BallTracker add-on is a seamless extension to PuttLab and offers a complete ball performance analysis, including multiple targets, integration with platforms, auto-calibration on breaking putts, visualization of the optimal putt, detailed result reports and 3D replay for training.

Skid phase		Ball Roll			
Skid distance [cm]	Skid time [ms]	Speed drop [%]	Roll Speed [m/s]	Roll Ratio [%]	Ball distance [m]
48.6	711	31.0	1.49	86.6	3.17
18.3	270	31.9	1.12	85.3	3.29
52.5	300	29.3	1.18	83.3	3.20
14.0	501	21.4	1.46	84.5	3.49



- Putting launch monitor
- Real ball traces and shot pattern
- Ball performance analysis
- For straight and breaking putts
- Display of ideal aim and ideal ball path
- Automatic integration with SAM PuttLab

What the Experts Say...



"**SAM PuttLab** has been one of my favorite tools for analysis, evaluation, and research of putting strokes over the past 10 years. The accuracy, consistency and ease of the user interface are the key factors that set this ultra-sound technology apart from other technologies."

David Orr, Founder of Flatstick Academy



"Our Golf Academy is proud to be at the forefront of the modern game. **PuttLab** is a key component of the coaching system we have in operation at the Home of Golf. It provides clear feedback, positive results and above all it is fun to use."

Steve North, Director Instruction of St Andrews Links Golf Academy

SAM PuttLab 7 Editions

Feature	Basic	Coaching	Coaching Plus	Studio
Comprehensive putt analysis (> 50 parameters)	•	•	•	•
Measurement and training module	•	•	•	•
Report Builder for customized reports	–	•	•	•
Print and PDF module	–	•	•	•
Audio feedback in training	–	•	•	•
Putter fitting module	–	•	•	•
Putting games	–	•	•	•
Tablet remote control (iPhone/iPad)	–	•	•	•
3D-Putt add-on	–	optional	•	•
Yips analysis report (wrist measurement)	–	–	–	•
Database export and statistic module	–	–	–	•
High speed video recording module New	–	–	–	•
SAM BallTracker New	–	–	–	optional
SAM BalanceLab software integration New	–	–	–	•
SAM Putting Laser	optional	•	•	•
SAM PuttStation	optional	optional	•	•
Add-on for wrist/head measurement (Yips)	–	–	–	optional
Triplet clips	1	2	2	5