

1. How to use the data export module of SAM PuttLab software

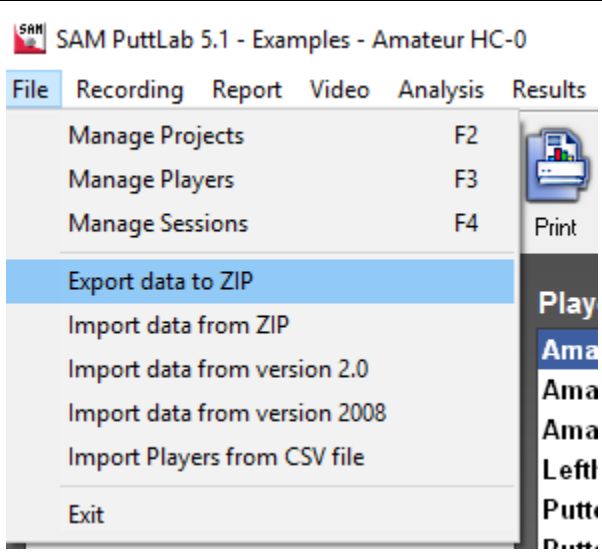
The data export module of SAM PuttLab allows to export selected data sets into compressed ZIP files. This functionality can be used to either transfer data to different PuttLab installations or to backup data for later usage or recovery.

There are 3 levels of data export available:

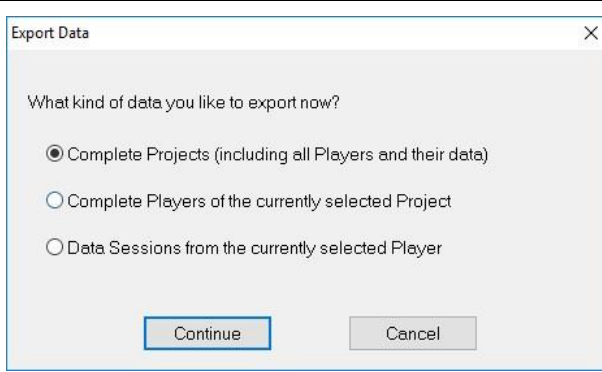
- Complete projects (export complete data of all included players)
- Complete players (including complete data for one player)
- Single data sessions (selected data from one player)

If you want to import data out of existing data export files please read chapter two of this document. Go to chapter two (data import)

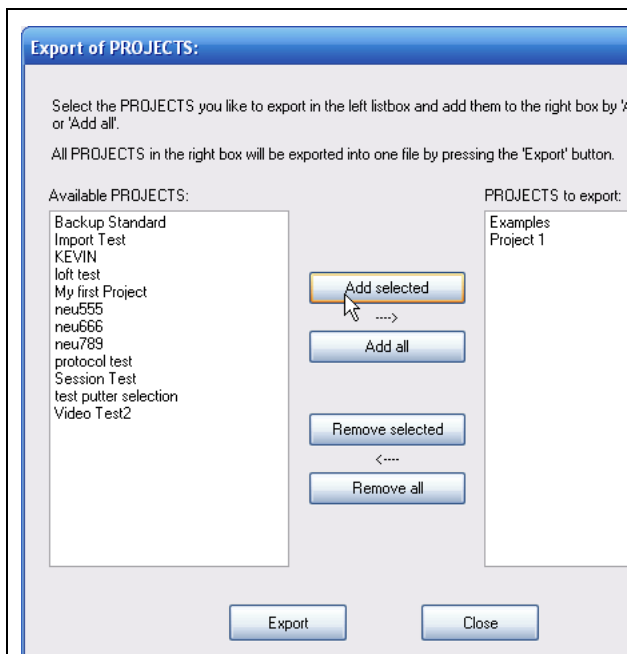
1.1 Export of complete projects

The screenshot shows the 'File' menu of SAM PuttLab 5.1. The menu items are: Manage Projects (F2), Manage Players (F3), Manage Sessions (F4), Export data to ZIP (highlighted), Import data from ZIP, Import data from version 2.0, Import data from version 2008, Import Players from CSV file, and Exit. A 'Print' icon is visible to the right of the menu items.

1. Go to the “File” section in the main menu and select “Export data to ZIP”.

The screenshot shows the 'Export Data' dialog box. It asks 'What kind of data you like to export now?' and has three radio button options: 'Complete Projects (including all Players and their data)' (selected), 'Complete Players of the currently selected Project', and 'Data Sessions from the currently selected Player'. There are 'Continue' and 'Cancel' buttons at the bottom.

How to use the data export module of SAM PuttLab software



☞ “Export of Projects” window opens.

In the left list you see all available projects. You can select projects and add one by one or you can select multiple projects in the left list and add all selected projects by "Add all".

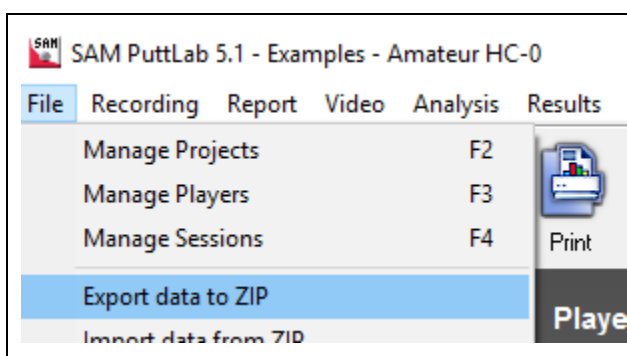
When you now press "Export" a "Save as" dialog will open up to let you define a file name and location for the resulting ZIP archive file.

All player data included in the exported projects will be copied to this compressed file and can be restored later on the same or a different PuttLab installation (SAM PuttLab 2008 or newer).



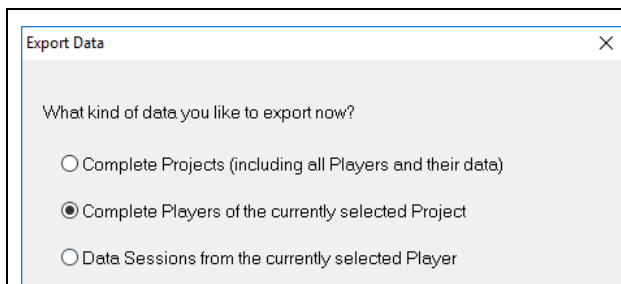
Depending on the amount of measurements and also the number and size of attached media files the total size of all files to export may be very big. In this case you will see a warning that the export process may take a while to finish. The export process cannot be cancelled once it has started. So please be patient and wait until the process is finished!

1.2 Export of complete players



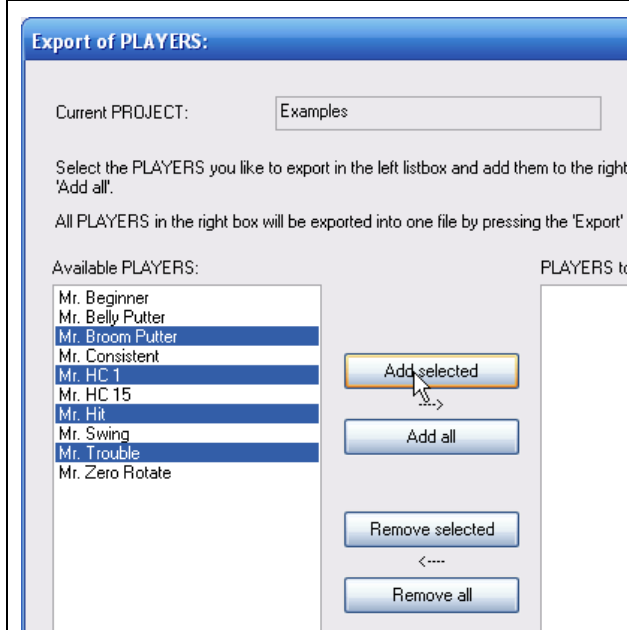
1. Go to the “File” section in the main menu and select “Export data to ZIP”.

How to use the data export module of SAM PuttLab software



☞ „Export Data“ window opens.

2. Choose “Complete Players of the currently selected Project”.



☞ “Export of Players” window opens.

In the left list you see all available players of the currently selected project. You can select players and add them one by one or you can select multiple players in the left list and add them all together by "Add all".

When you now press "Export" a "Save as" dialog will open up to let you define a file name and location for the resulting ZIP archive file.

All data of all players listed on the right side will be exported to this compressed file and can be restored later on the same or a different PuttLab installation (SAM PuttLab 2008 or newer).

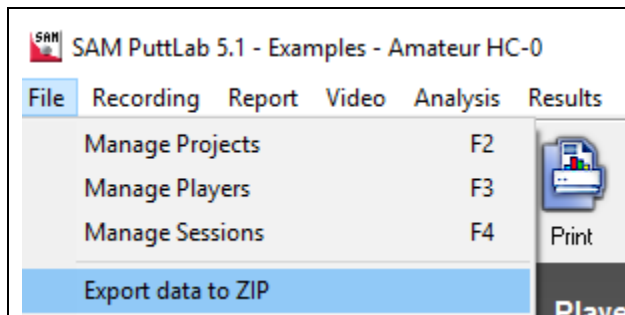


Depending on the amount of measurements and also the number and size of attached media files the total size of all files to export may be very big. In this case you will see a warning that the export process may take a while to finish. The export process cannot be cancelled once it has started. So please be patient and wait until the process is finished!

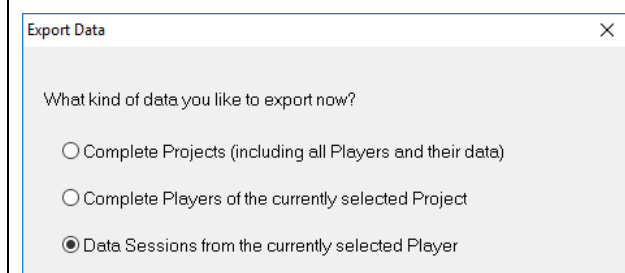


Exporting complete projects is the best way to backup your data. It is easy to even export all available projects into one export archive for easy full backup. It may be good to split into one file per project if there is a big amount of data available over time. So one file would be too big to hold all the data.

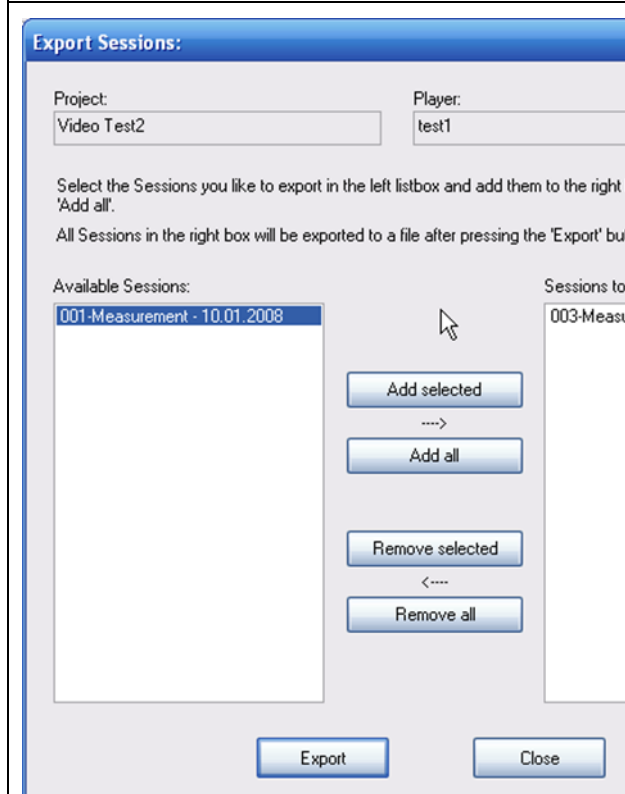
1.3 Export selected data sessions



1. Go to the "File" section in the main menu and select "Export data to ZIP".



2. Choose "Data Sessions from the currently selected Player".



3. "Export Sessions" window opens.

In the left list you see all available sessions of the currently selected project and player. You can select sessions and add them one by one or you can select multiple sessions in the left list and add them all together by "Add all".

When you now press "Export" a "Save as" dialog will open up to let you define a file name and location for the resulting ZIP archive file.

All data of all players listed on the right side will be exported to this compressed file and can be restored later on the same or a different PuttLab installation (SAM PuttLab 2008 or newer).

The information to which project and player these sessions belong is also saved in the export file and can be recovered during the import process.

How to use the data export module of SAM PuttLab software



Depending on the amount of measurements and also the number and size of attached media files the total size of all files to export may be very big. In this case you will see a warning that the export process may take a while to finish. The export process cannot be cancelled once it has started. So please be patient and wait until the process is finished!

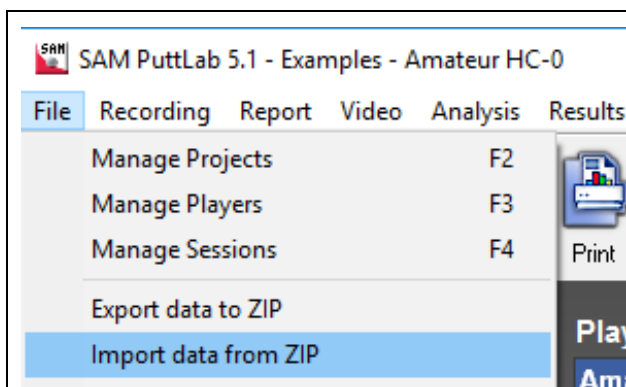


Please read the next chapter [“How to import data out of existing data export files”](#).

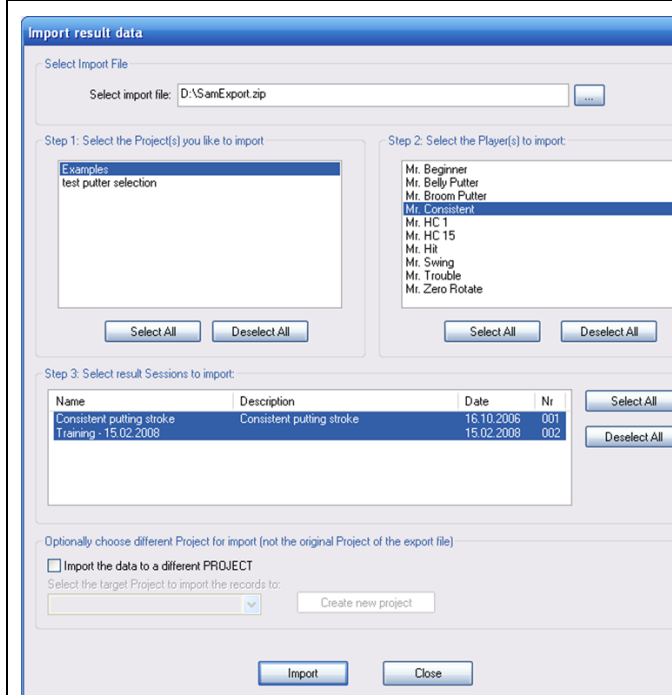
2. How to import data out of existing data export files

The result records import function allows to import result records out of previously created export files in the "cabinet" format. The import process will import the results contained in the file and also the original *Player*. The result records can be imported to an existing *Project* or to a new *Project*.

2.1 Import data



Go to the "File" section in the main menu and select "Import data from ZIP".



☞ "Import result data" window opens.

At the top you can select the file to import.

Select import file: D:\SamExport.zip

Press the button  and select a SAM Puttlab data export file (ZIP).


Once a valid file is selected the software will analyse the content of the import file. This may take a while depending on the number of data files included in the archive.

After this is finished you will see the content of the import archive in the fields for projects, players and sessions.

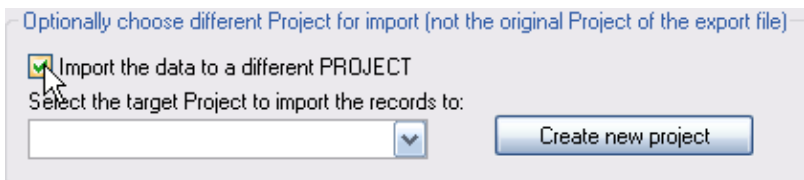


How to import data out of existing data export files

There are 4 levels of data import available:

- Complete projects (including all data and attachments)
- Complete players (including all data and attachments)
- Single or multiple data sessions
- Import data to different projects

Select projects to be imported	<p>If there a projects available in the archive then they are listed in the left upper list field. If you click on one project you will see the included players in the players field on the right.</p> <p>If you select multiple projects on the left side you will not see any players, because in this case all the selected projects and the included players will be imported completely</p> <p>So you always have the option to select portions of the data like single players or sessions for the import process. But you can also just select everything (all projects) that are included in the archive.</p> <p>Press "Import" to finally import the selected projects into your current SAM PuttLab installation.</p> <div data-bbox="464 1122 1433 1373"> Recovering all projects contained in a PuttLab data archive is very easy: Just click on "Select All" below the projects box on the top left and then press the "Import" button. This will exactly recover the complete content of the archive to your current PuttLab data.</div>
Select players to be imported	<p>If you click on one project in the left upper box you will see the included players in the players box on the right. You can choose to import all the available players including their data (Select All) or you can just select one or any number of players by clicking with the mouse.</p> <p>Press "Import" to finally import the selected players into your current SAM PuttLab installation.</p>
Select sessions to be imported	<p>It is also possible to import one or multiple sessions. To do this select the project and the player containing the session. You should then see the available sessions listed in the session box. Select the desired session for import there.</p>

How to import data out of existing data export files

	<p>Then press the "Import" button and only the selected session will be imported.</p>
Import data to different projects	<p>By default the imported data will be added to the same project as the data was originally associated with. But it is possible to add imported data to a different or newly created project also.</p> <p>Use the following option if you like to do this:</p> <div data-bbox="466 555 1273 734" data-label="Image"></div> <p>Check the box "Import the data to a different PROJECT" and select one project from the list or create a new project with the "Create new project" button.</p> <p>All the selected data will then be added to this project instead of the originally associated project.</p> <div data-bbox="466 1012 1433 1214" data-label="Text"><p> If you selected an existing <i>Project</i> as target and the <i>Player</i> is already existing in this <i>Project</i> you will get a warning message. You can add the data records to this <i>Player</i> anyhow if you like to do this.</p></div>
	<p>After the import process has finished, you can access the new imported result records in the "Data selection" bar.</p>