

Display options for SAM PuttStudio

SAM PuttStudio consists of up to 3 different software applications which ideally are running side by side on one big display or on multiple displays.

The concept how to work with SAM Studio is you mainly operate SAM PuttLab and 3D-Putt and Video will automatically record/replay. So they run in a remote mode when connected to PuttLab.

Basic Studio setup (2 applications):

- SAM PuttLab (main application)
- SAM 3D-Putt (3D replay of putter movement and needed for setup and projection games)

Extended Studio setup (3 applications):

Additional to the basic setup we provide software for video recording (SAM Video) or Balance Analysis (SAM BalanceLab).

One of the two applications can be added to the configuration optionally.

SAM Video is a standard component delivered with every SAM Studio package.

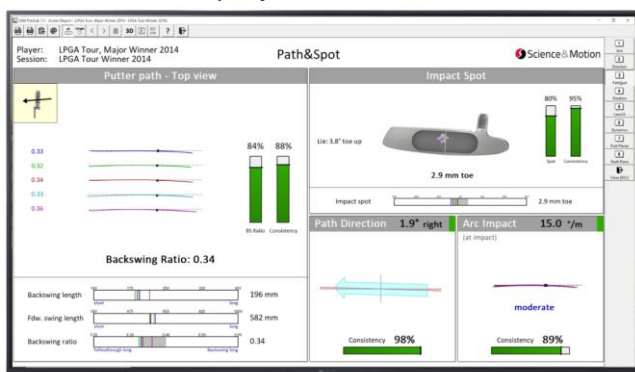
SAM BalanceLab will need additional hardware (SAM Balance Plate or Boditrak mat)

Recommendations:

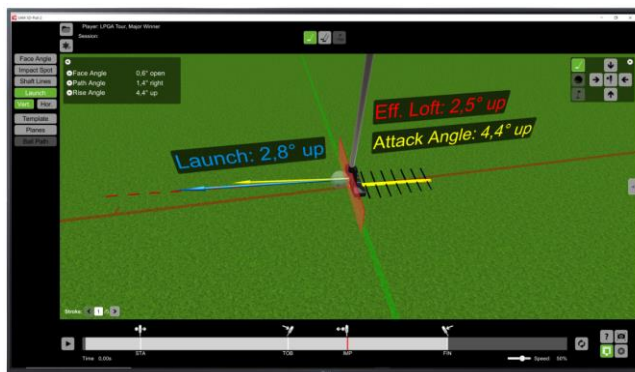
- One dedicated display (TV) for each application. Or at least two single displays. PuttLab application should always run on a dedicated display.

Examples:

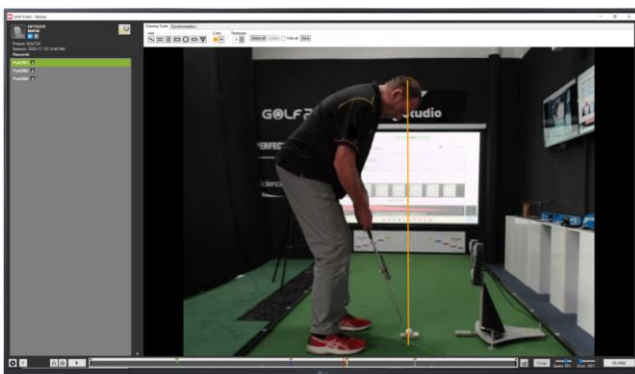
3 dedicated displays:



TV1: SAM PuttLab



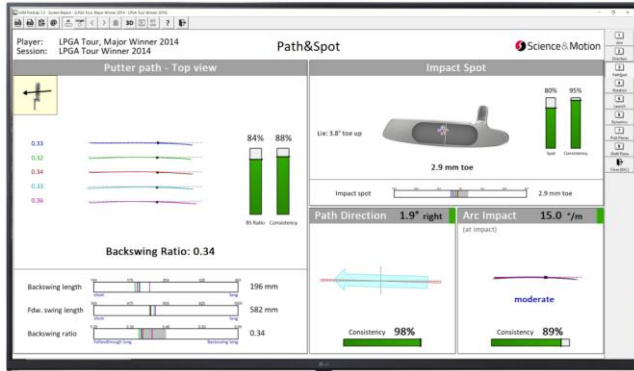
TV2: SAM 3D-Putt



TV3: SAM Video (or SAM BalanceLab)

2 dedicated displays:

Option 1) is to set one display up for a side by side view of SAM 3D-Putt and SAM Video:



TV1: SAM PuttLab

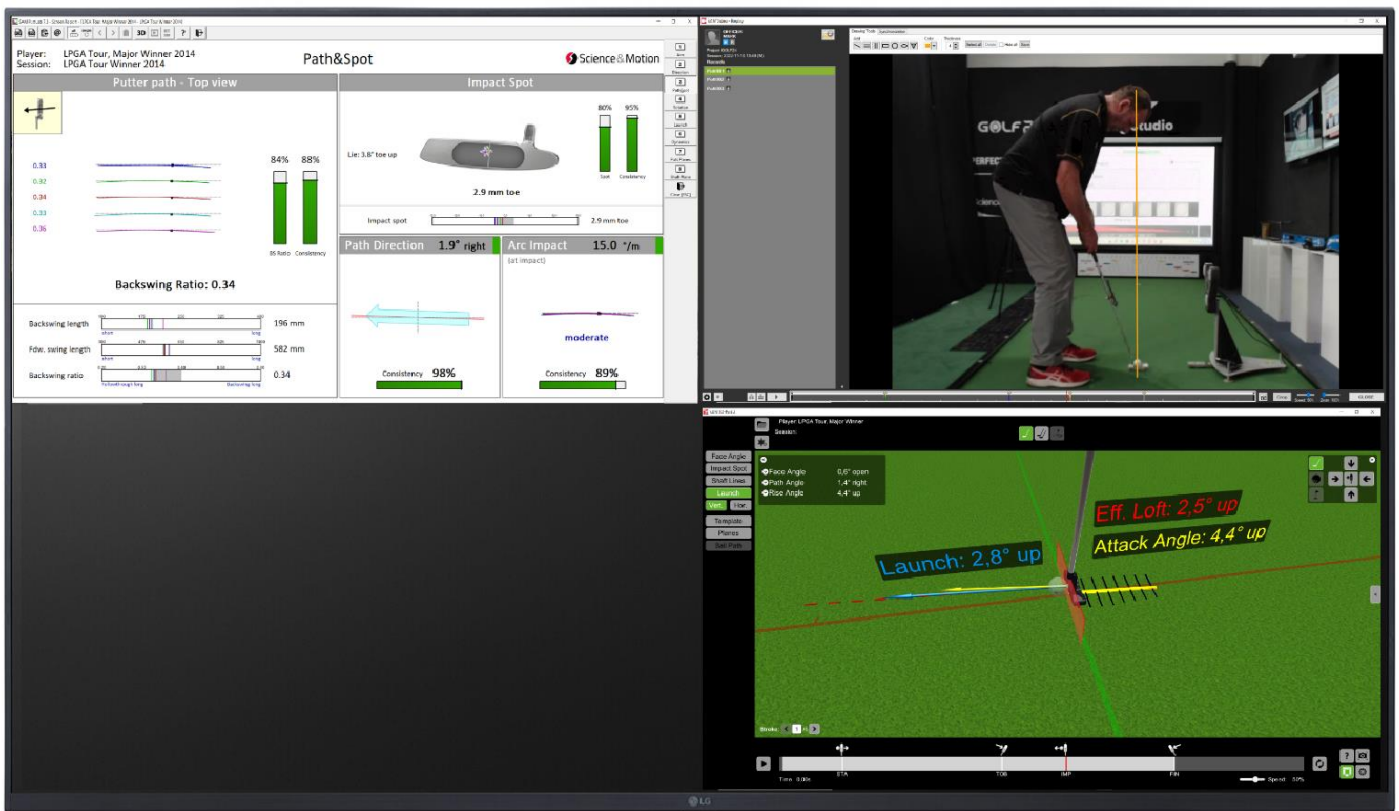


TV2: SAM 3D-Putt & SAM Video

Disadvantage here is the portrait format which is not ideal to view the content.

Option 2) would be to only show one application at a time in full size, either 3D-Putt or Video. Based on what you want to see you can switch which app is fully visible (short key).

- b) One very big screen to run all applications full side by side. That should be a 4K display with size of at least 70". 70" will give you 4 "virtual" screens of 35". Please consider the distance of the user to screen when deciding about the size. Bigger is better here.



Please consider the number of independent ports on the graphics card/computer you will need for the different options outlined here. One additional port is needed for the projector.